

INNOVATION.
NOT DUPLICATION.™



DIVISION OVERVIEW

MINING SOLUTIONS

DOM-EX OVERVIEW

DOM-EX PROVIDES NEW, REBUILT AND QUALIFIED USED PARTS AND COMPONENTS TO THE MINING AND QUARRY INDUSTRIES. OUR FACILITIES HOUSE AN EXTENSIVE INVENTORY TO PROVIDE OUR CUSTOMERS WITH UNLIMITED ALTERNATIVE SUPPLIER OPTIONS. OUR TEAM ALSO OFFERS GLOBAL RELOCATION SERVICES, WITH THE EXPERIENCE AND EXPERTISE TO MANAGE THE ENTIRE SCOPE OF THE RELOCATION PROJECT FROM DISASSEMBLY TO RECOMMISSION.

OUR MISSION & CUSTOMER PROMISE

Founded in 1982, our core mission has remained the same - to be a cost savings alternative supplier to the global mining industry.

Dom-Ex is located in Hibbing, Minnesota, and has an experienced team ready to service your component or equipment needs for mining trucks, dozers, loaders or shovels. Our inventory consists of not only the popular items like engines, transmissions, finals, hydraulic cylinders, differentials and suspensions but also the harder to find items like cabs, decks, radiators, castings, attachments and tires. Our team focuses on the CAT and Komatsu brands, but we also carry inventory for O&K, Hitachi, LeTourneau, Euclid and Bucyrus.

Over the last 35+ years, our team has created extensive networks and business relationships all over the world. These connections provide our team with insight about idled mining equipment available globally that can be relocated to your mine site. Our relocation services group is able to manage every detail of the equipment relocation process from disassembly and transport to reassembly at your mine site.

CORPORATE OVERVIEW

Dom-Ex was the very first company to join the H-E Parts team in 2006. As a leader in the industry for over 35 years, Dom-Ex fit right in with H-E Parts' mission to strategically combine leaders in the used parts and components industry. Each division of H-E Parts offers solutions in support of surface mining equipment fleets, crushing and materials processing and mobile construction equipment fleets.

SAFETY

At H-E Parts Dom-Ex, one of our core values is that we will not compromise accident and injury prevention or environmental compliance to increase profit or production.

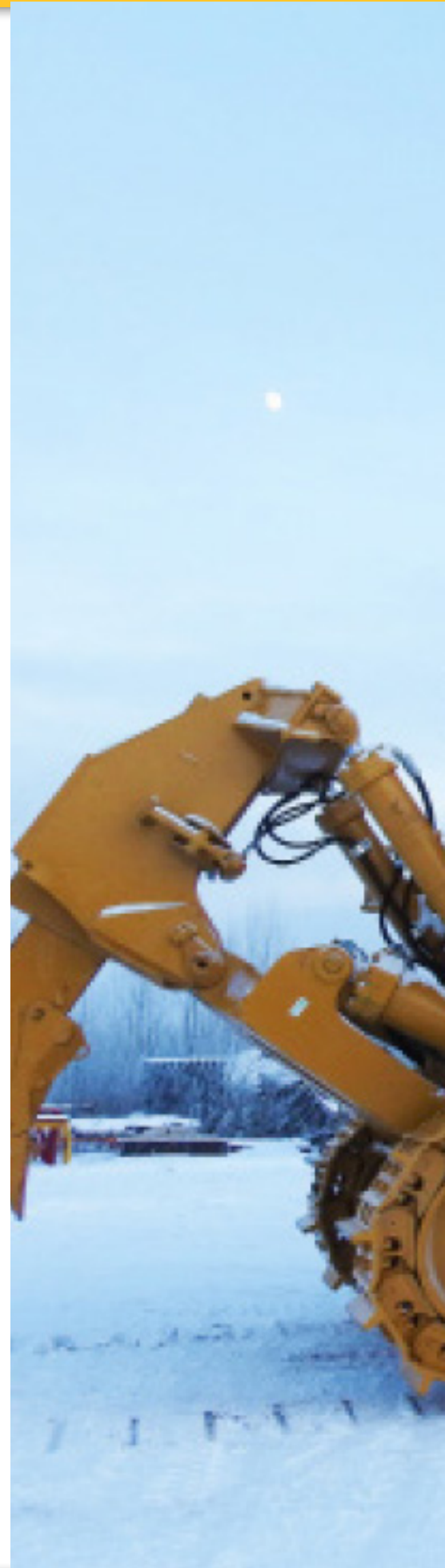
We are working toward creating safety excellence, not just focusing on preventing accidents but rather focusing on what goes right, not just what goes wrong.

Our "See You Tomorrow" philosophy is underpinned by a set of beliefs, behaviors and key safety promises that drive positive safety outcomes.

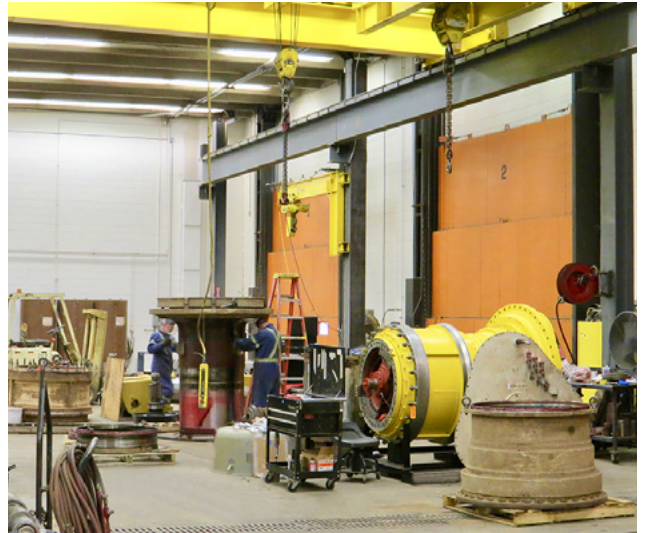
QUALITY

Our team members place priority on quality to ensure we meet or exceed our clients' expectations in design, products, services and solutions globally.

Quality and compliance is an integral part of what we do at H-E Parts Dom-Ex and as such, we regularly review and improve our policies and practices to reflect this.







OUR FACILITIES

SHOP

Located in Hibbing, Minnesota, our shop provides 17,000 sq. ft. of service center space with the capabilities to lift components up to 60,000 lbs. This facility also contains our greatest asset: our people. Our technicians have a combined 30+ years of experience and extensive working knowledge in servicing all major manufacturers in the mining sector, including Caterpillar, Komatsu, Unit Rig and many others. With the capability to inspect components to qualify as a core or running take-out, our team can rebuild any equipment or component to OEM specifications and/or customer recommendations. These capabilities allow our team to provide greater cost-saving opportunities for our customers where they may not have had a suitable core to exchange.



WAREHOUSE

At H-E Parts Dom-Ex our warehouse is stocked with over 138,000 individual parts housed within our 45,000 sq. ft. facility. Many of these parts have already been inspected and are ready to ship the very same day that an order is received. For our larger size parts and components, our team has 70+ acres of outdoor storage adjacent to our warehouse. This mile-long stretch of land contains over 4,100 bin locations, 72 rows of parts and provides plenty of room for storing and dismantling dozens of pieces of equipment each year. This results in one of the largest selections of mobile mining parts anywhere in the world. We welcome our customers to search our extensive online inventory or to give us a call, our team would be happy to help you find the parts you need.



TRUCKS

MECHANICAL DRIVE TRUCKS

- Final Drives
- Transmissions
- Torque Converters
- Front Corner Groups
- Operator Cabins
- Engines
- Radiators
- Hydraulic Cylinders
- Fuel/Hydraulic Tanks
- Dump Bodies
- Axle Housings
- Tires/Rims
- Sheet Metal
- Chassis





ELECTRICAL DRIVE TRUCKS

- Wheel Motors
- Alternators
- Blown Grid Assemblies
- Grid Blower Motors
- Electrical Cabinets
- Armatures/Rotors
- Stators
- Contactors
- Capacitors
- Control Cards
- IGBTs
- Front Corner Groups
- Operator Cabins
- Engines
- Radiators
- Hydraulic Cylinders
- Fuel/Hydraulic Tanks
- Dump Bodies
- Axle Housings
- Tires/Rims
- Sheet Metal
- Chassis





DOZERS

- Final Drives
- Steering, Clutch and Brake Assemblies
- Trans/Bevel Assemblies
- Torque Converters
- Track Frames
- Blades
- Push Arms
- Rippers
- Operator Cabins
- Engines
- Radiators
- Hydraulic Cylinders
- Fuel/Hydraulic Tanks
- Dump Bodies
- Axle Housings
- Track Groups
- Sheet Metal
- Chassis
- Undercarriage Components





LOADERS

- Final Drives
- Transmissions
- Torque Converters
- Boom Arms
- Buckets and Bucket Links
- Front Frames/Rear Frames
- Engines
- Radiators
- Hydraulic Cylinders
- Fuel/Hydraulic Tanks
- Axle Housings
- Tires/Rims
- Sheet Metal



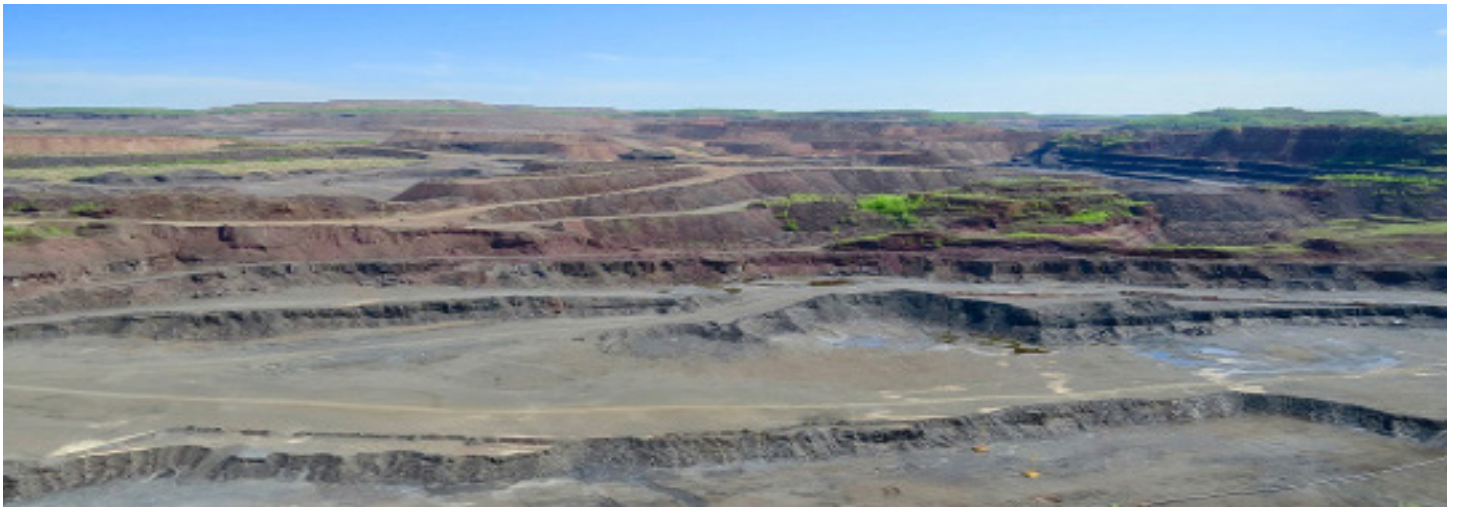


SHOVELS

- Final Drives, Propel Transmissions and Propel Motors
- Swing Transmissions and Swing Motors
- Track Frames and Track Groups
- Undercarriage Components
- Slew Bearings
- Revolving Frames
- Car Bodies
- Booms/Sticks/Dippers
- Buckets
- Operator Cabins
- Engines
- Radiators
- Hydraulic Cylinders
- Fuel/Hydraulic Tanks
- Sheet Metal

GRADERS

- Final Drives
- Transmissions
- Wheel and Brake Groups
- Circle and Circle Drive Assemblies
- Drawbar Assemblies
- Front Axle Assemblies
- Moldboards
- Rippers
- Operator Cabins
- Engines
- Radiators
- Hydraulic Cylinders
- Fuel/Hydraulic Tanks
- Tandem Housings
- Tires/Rims
- Sheet Metal
- Chassis



INNOVATION.
NOT DUPLICATION.™

H-E PARTS, GLOBAL LOCATIONS, FOR GLOBAL SOLUTIONS.



CUSTOMER SUPPORT

H-E Parts provides the same responsive service to all customers, whether it's a small contract crushing customer or a large multinational company. This ensures our clients know what to expect from us and can rely on quality products with unrivaled service support to get the job done - on time, on budget and with zero harm.

With a large client base over a variety of industries, it is our ability to deliver on our promise to work with suppliers and customers to extend service life, reduce downtime and work to a high standard that sees our customer base grow exponentially every year.



HEPI22JULY2021

www.h-eparts.com