

**INNOVATION.  
NOT DUPLICATION.™**



**CRUSHING SOLUTIONS**

## **PROTECH™ MMC WEAR LINERS**

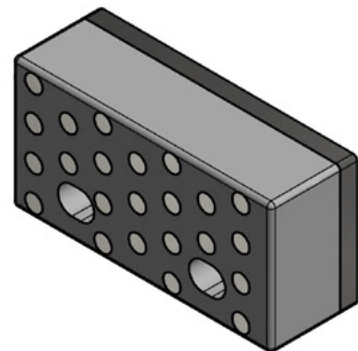
H-E PARTS INTERNATIONAL (H-E PARTS) SPECIALIZES IN PROVIDING WEAR MANAGEMENT SOLUTIONS. OFFERING A FULL RANGE OF PROTECH™ WEAR PROTECTION PRODUCTS, H-E PARTS PROVIDES THE RIGHT MATERIAL OR COMBINATION OF MATERIALS FOR EACH APPLICATION.

H-E Parts metal matrix composite (MMC) wear liners represent a significant advancement in wear performance, providing longer wear life of conventional liners and suitable for a wide range of applications. Based on a patent pending design, the liners utilize extremely hard inserts added to ProTech™ steel at the manufacturing stage. Inserts are specifically designed to minimize the chance of tear-out & spaced to ensure that casting integrity is retained.

The H-E Parts engineering team are able to advise suitable applications to mitigate any concerns of raised risk when utilizing ProTech™ MMC wear liners. Due to manufacturing process complexities, ProTech™ MMC wear liners life vs. cost ratio is interconnected. The true value of the liner is realized by accessing the total cost of ownership, taking into account shut-down reductions and increased throughput due to chute condition and crusher availability.

### **ENGINEERED SITE-SPECIFIC LINER DESIGNS**

Material selection is only a small part of the value H-E Parts offer our customers. The H-E Parts wear liner development program ensures that both design and materials are optimized for individual applications, providing the lowest total cost of ownership regardless of material selection. A tailored approach allows H-E Parts to ensure that liner management policies are compatible with other maintenance requirements, whether that is isolated to a single crusher or the processing plant as a whole.



**CRUSHING SOLUTIONS**

HEP18AUG2020

[www.h-eparts.com](http://www.h-eparts.com)