

**INNOVATION.
NOT DUPLICATION.™**



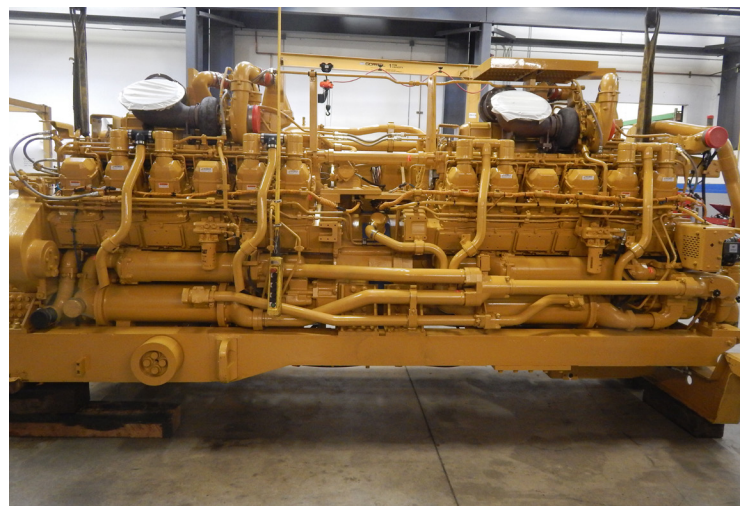
ENGINE SOLUTIONS

STATERRA POWER™ ENGINES INCREASE LIFE OF CAT 797

H-E PARTS INTERNATIONAL (H-E PARTS) SPECIALIZES IN IMPROVING ENGINE PERFORMANCE FOR OUR CUSTOMERS IN THE MINING AND ENERGY MARKETS. UTILIZING OUR STATERRA POWER™ ENGINE TECHNOLOGY AND STATE-OF-THE-ART REMANUFACTURING FACILITIES, WE PROVIDE OUR CUSTOMERS TAILORED SOLUTIONS AND SUPERIOR, LONGER-LASTING ENGINES

CUSTOMER	Oil Sands Customer
LOCATION	Northern Alberta Canada
APPLICATION	CAT 797 Haul Trucks
PRODUCT	StaTerra Power™ Rebuilt 3524 Engine

A contractor for an oil sands mine in Northern Alberta Canada was in need of a partner to remanufacture 3524 engines for CAT 797 haul trucks. The customer previously worked with H-E Parts on smaller engines and had come to appreciate the quality and performance of our engines over the OEM's. After touring our world class engine facilities and learning more about our capabilities, the customer agreed to proceed with H-E Parts in a remanufacturing program.



3524 Rebuilt Engine

ADVANCED INDUSTRIAL MACHINING

All StaTerra Power™ engines undergo the highest level of inspections and proprietary reconditioning processes to increase performance and ensure our engines outlast the competition. After assembly, all engines are dyno tested before delivery, ensuring that all performance requirements are achieved. These tests include:

- Documented Component Inspections and Processes
- CNC Equipped Cylinder Block Machining
- Crankshaft Reconditioning
- Cylinder Head Reconditioning
- Connecting Rod Reconditioning
- Camshaft Reconditioning
- Certified NDT Testing
- Millipore Testing Capabilities
- Surface Finish and Hardness Testing
- Dynamometer Testing (Performance Record Provided)

H-E Parts has custom built balancing equipment designed specifically for high horsepower industrial engines. This equipment allows us to verify the balance of the crankshaft assembly as well as make improvements to optimize engine balance. Our engineers balance every crankshaft that is destined for life in one of our remanufactured engines. This is standard procedure for all of our StaTerra Power™ engines. This extra step provides assurance that every engine produced by our assembly facilities operates smoothly and trouble free. The custom bobweights, computerized technology, and solid base rigidity of these purpose-built machines enable us to balance to the most stringent specifications.

Another reason the customer chose H-E Parts was because of our custom remanufacturing solutions. The customer was able to work with our production team on the core tear downs and subsequent remanufacturing scope of work to ensure the end product was built to their specifications for the most competitive price to performance. Additionally, H-E Parts has substantial experience working on engines that power large haul trucks, like the CAT 797. Few facilities have the team or capabilities to support an engine of this size.

TODAY THE CUSTOMER IS RUNNING MULTIPLE STATERRA POWER™ ENGINES WITH MORE ON THE WAY.

H-E Parts International replacement parts are compatible with the makes and/or models of the third-party equipment described. H-E Parts International is not an authorized repair facility of these third parties and it does not have an affiliation with any manufacturers of these third-party products. All brands, original equipment manufacturer (OEM) part numbers or references are owned by the respective OEM entities or their affiliates. These terms are used by H-E Parts International for identification and cross reference purposes only and are not intended to indicate affiliation with, or approval by the OEM, of H-E Parts International or its products.



Dynamometer Testing



Balancing Equipment



StaTerra Power™ Engine



ENGINE SOLUTIONS

HEPI02OCT20

www.h-e-parts.com