

# CASE STUDY

## MP1000 HEAD REPAIR

H-E PARTS INTERNATIONAL (H-E PARTS) OFFERS SPECIALIZED MAINTENANCE SERVICES FOR ALL YOUR MINERALS PROCESSING EQUIPMENT AND COMPONENTS. H-E PARTS OFFERS TAILORED SOLUTIONS THAT PROVIDE ADDED VALUE BY EXTENDING SERVICE INTERVALS, IMPROVING PLANT PERFORMANCE AND PRODUCTIVITY, WHILE REDUCING DOWNTIME AND ASSOCIATED LIFECYCLE COSTS.

At a Western Australian iron ore mine, a customer had a major internal crack (linear indication) in the head of their MP1000 crusher. Because the crack was situated in a non-impact area, it was most likely caused by an inferior casting when originally manufactured (in H-E Parts opinion the casting was likely cooled too quickly). The OEM was not willing to repair the component due to the location of the crack, the client was referred to, and subsequently engaged H-E Parts to complete a major repair on the component by parting it in half and repairing it internally, as an alternative to a complete head replacement.

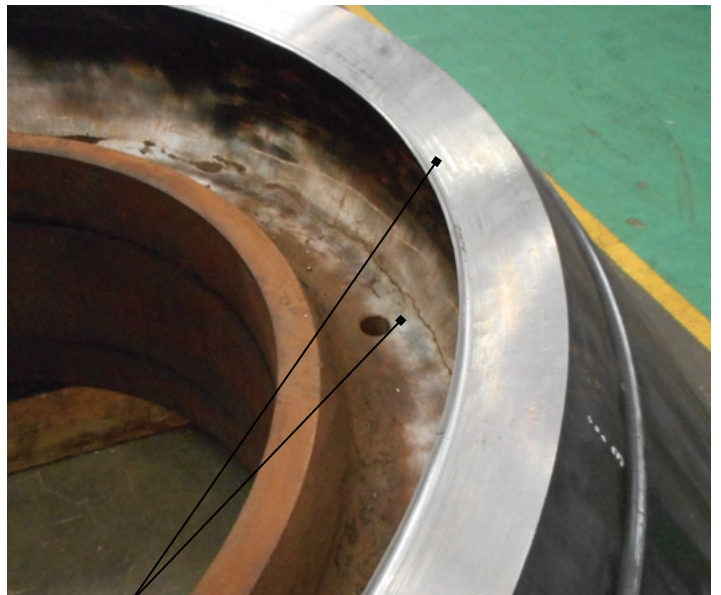
All major works and welding were completed in-house at H-E Parts Western Australian facility. The scope of work involved in repairing the crack included: strip and assess, stress relieving, metallurgical services, welding, machining and non-destructive testing (NDT).

By repairing the MP1000 head, the following cost savings and benefits were achieved for the client:

- 40% cost saving by repairing rather than replacing the head
- Due to stress-relieving, building up (thickening) the cavity area and re-machining a smooth transition, the head is in 'better than' original cast condition
- The head is now back in service without issue

Since the repair the customer has engaged H-E Parts for additional service work, and this repair is being conducted for many other sites.

LOCATION	Western Australia, Australia.
APPLICATION	Metso MP1000
PRODUCT	MP1000 Head Repair



Lower head section parted with visible crack



Upper head section ready for repair

H-E Parts International replacement parts are compatible with the makes and/or models of the third-party equipment described. H-E Parts International is not an authorized repair facility of these third parties and it does not have an affiliation with any manufacturers of these third-party products. All brands, original equipment manufacturer (OEM) part numbers or references are owned by the respective OEM entities or their affiliates. These terms are used by H-E Parts International for identification and cross reference purposes only and are not intended to indicate affiliation with, or approval by the OEM, of H-E Parts International or its products.